

Company Introduction

Cooperative Wageningen

27.03.2025



WHAT DO WE OFFER?

PlanEnergi provides expert guidance for the implementation and development of innovative projects within the renewable energy sector.

Engineering consulting firm

40+ years renewable energy experience

50+ employees

3 Offices in Denmark

Skørping (HQ), Aarhus and Copenhagen

6 SUBJECT-MATTER EXPERT TEAMS

Biogas

Power-to-X (PtX)

Energy storage

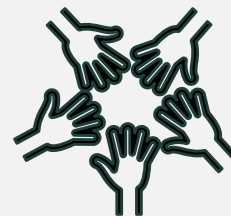
Solar & Wind

District Heating

Heat Pumps



4 MULTIDISCIPLINARY TEAMS



Feasibility Studies

Strategic Climate and Energy Planning

Authority Processing

Tendering and Construction Management



UNIQUE RENEWABLE ENERGY ORGANISATION

Driving sustainable energy with a one-of-a-kind democratic model.

- 1

Independent Non-Profit Consultancy.

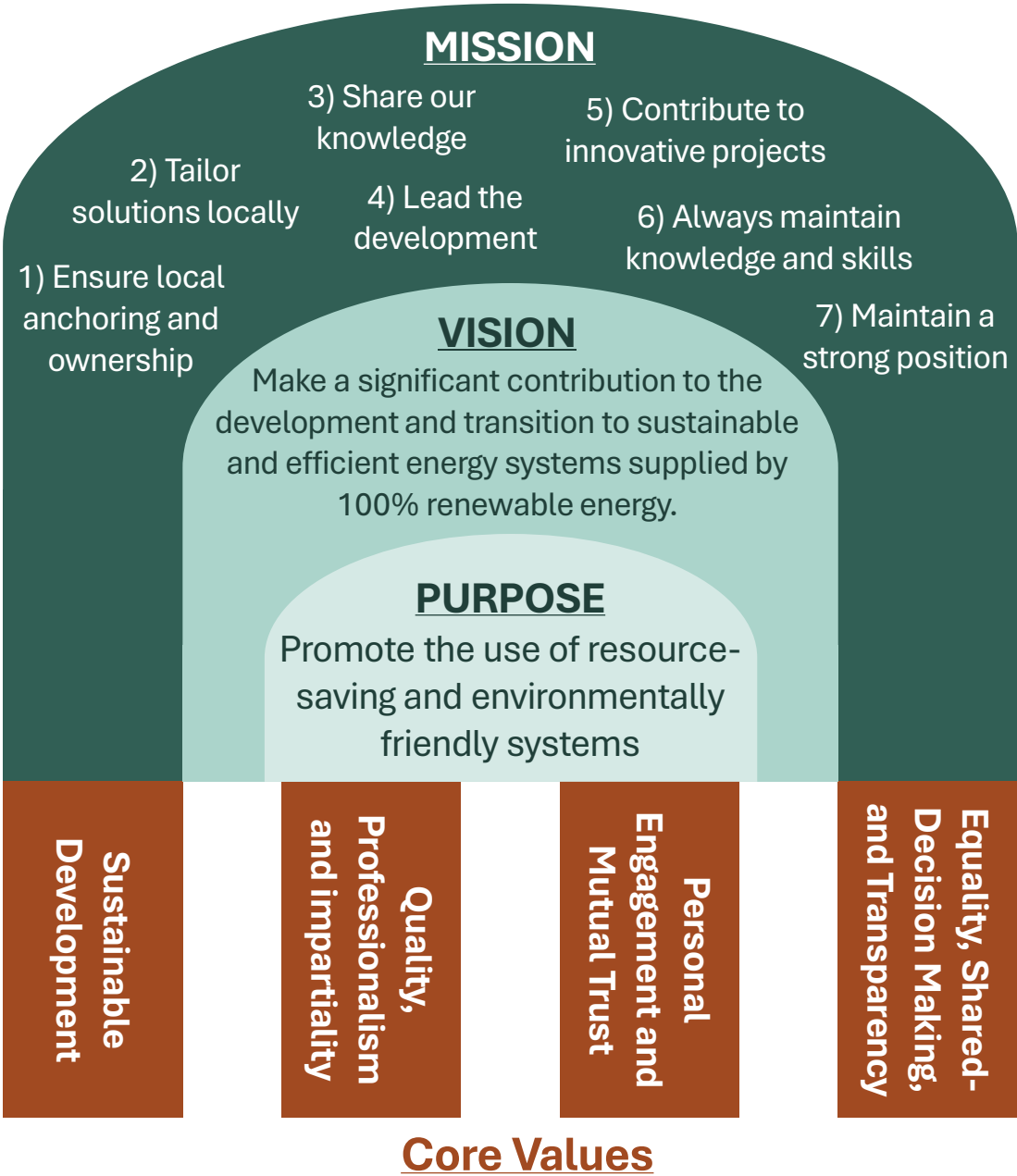
Established in 1983, aiming to drive the renewable energy movement.
- 2

Democratic Governance.

Operating as a self-governing institution (commercial foundation), all significant decisions are made between the employees
- 3

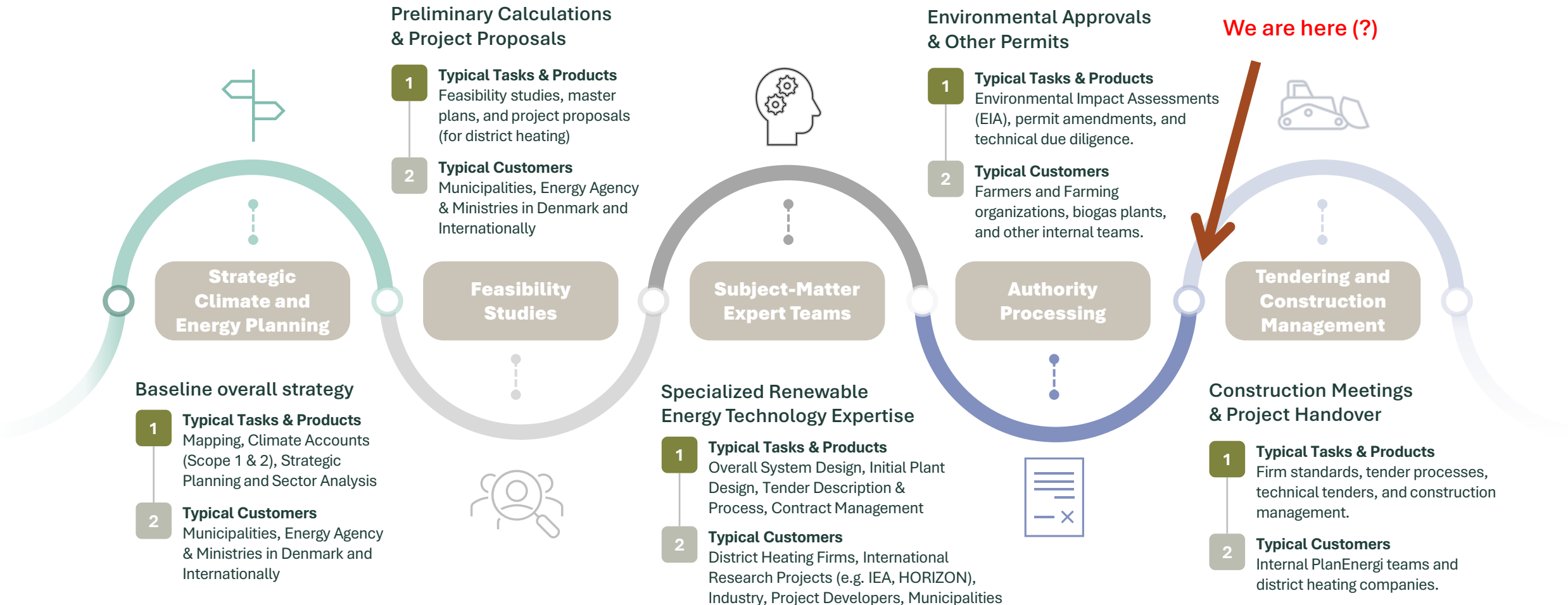
Pioneers in Renewable Energy.

PlanEnergi has played a pivotal role in Denmark’s status as a green energy powerhouse.



PLANENERGI'S SERVICES AND EXPERTISE

Providing all-round guidance in all types of renewable energy projects, ensuring sustainable and innovative energy solutions.



Current Status

Original Request to PlanEnergi

Support for WOW in Tendering the Heat Pump / Heat Central

WP1: Review of Existing Materials

- Annotated review provided context for starting the project, but time has been limited
- However, it is just the beginning – that is why we are here these two days!
- Raised many new questions (from both sides)
→ This leads to a key question: **What's relevant to discuss moving forward?**

Clarifying WOW's Needs & Objectives

- What does WOW actually need? What are the core objectives?
 - e.g. “We need the heat central operational soon”
 - “We want to reconsider the design – we are aiming for a Danish solution” / “We want to make sure we run the *best* business case possible”

Desired Outcome from These Two Days: The so-called *Conclusion*

- Establish a starting point for continued work
- Expectation Alignment on the outcomes, goals and deliverables: e.g. “*push the button to order*” or “*re-evaluate key decisions*”?
- Determine the required level of detail in the analysis of supporting and decision-making documents, how broad is the scope?

PlanEnergi

Thank you!



Niels van der Veer

| nv@planenergi.dk

| www.planenergi.eu